



CHARTWELL

COUNTRY ESTATES

MARCH / APRIL 2022 NEWSLETTER



19 MAY

COGS

Venue TBC
Contact Howie on
082 932 4778

27 MAY

SWEEPSTAKES

Contact Maureen
on 083 228 1753
Time: 6pm for
6.30pm

BEAUTIFUL CHARTWELL SKIES

Photo from Jodi Bac (Via Chartwell General Chat Whatsapp Group)

CHARTWELL COUNTRY ESTATES INFRASTRUCTURE MAINTENANCE AND UPGRADE REQUIREMENTS 2022

After a recent drive around and meeting held with a contingent of City of Johannesburg officials representing various departments, the CCE submitted the following list of infrastructure maintenance and upgrades for our area. We will be in ongoing engagement with our ward councillor and COJ department managers to ensure that the items raised are addressed.



Johannesburg Roads Agency

Summer weekly maintenance items:

- Clearing silted up intersections at Third Rd/ Runnymede Ave, Second, First Rd/ Runnymede Ave
- Clearing silt off Third Rd between Runnymede Ave and Romney Rd

All year round monthly maintenance:

- Grading all gravel roads
- Clearing & maintaining all storm water infrastructure
- Maintenance of storm water management system at Plot 153 (Cnr Third & Runnymede Ave)
- Maintaining transitions from gravel to tar
- Fixing potholes and roads that have been damaged due to burst water pipes.

- Cutting and maintaining all unattended verges in the area, particularly on those properties owned by COJ as well as vacant stands. These are a major security risk & high risk for land grabs
- Road markings to be refreshed

Infrastructure upgrades required:

- Traffic calming measures required as per attached area map including assistance with obtaining wayleaves
- Re-surfacing of Third Rd, Longleat Ave & a portion of Runnymede Ave
- Road signage alerting road user to slow down due to horses, pedestrians, cyclists & children
- Pedestrian crossing to be installed and painted as per attached area map
- Storm water management system to be installed along Runnymede Ave, especially towards the intersection with Third Rd to alleviate the current silting issue
- Storm water management system, channels to be installed along First Rd, Seven Oaks gravel section, Cladon Rd, Romney Rd, Fourth Rd and a portion of Fifth Rd.
- Paving side-walks for pedestrians along Third Rd & Second Rd
- Closing holes that have been dug next to street light posts on Third Road
- Finalization of infrastructure and storm water management plan with the JRA and the developers of Broadacres Academy school along Fifth Road



Joburg Water

Weekly maintenance items

- The continuous maintenance and upkeep of the sewage pump station along the Klein Jukskei River, this is a major problem in our area. We have had regular sewage spillages in the river which result in huge environmental problems, terrible smell, dead fish & birds and a general health hazard for our residents. We have been in discussions with JW to ensure that all systems are maintained and monitored, but it seems to be an ongoing problem. We would like the communication channels to include the sewage team at Joburg Water.

Water mains - Infrastructure maintenance & upgrade items:

- Locate all water valves that are hidden or are non-existent in & around our area. Once located, if they are faulty, they need to be replaced, if they are non-existent, a valve needs to be installed. This will save huge amounts of time, water and inconvenience to residents.



- Upgrade the water supply pipes in the sections of Chartwell that have not yet been upgraded. (This is the northern part of Chartwell, between Third Rd & Cedar Rd)
- We would like to establish a direct line of communication with the relevant person in order to speed up the reporting & repair process when there is a burst or damaged pipe.
- We would like feedback on what the chances are of Chartwell getting municipal sewage system in the near future. We have heard about the new Joburg Water sewage plant being built near Lanseria. When will Chartwell be able to benefit from this?



City Parks

Summer monthly maintenance:

- Cut all vacant COJ properties, verges & unattended privately owned properties and verges as stipulated in the title deed. Unkept and overgrown properties and verges is a huge security risk in our rural agricultural area as it gives criminals good place to hide..
- We would like to obtain some plants from City Parks to be able to beautify certain sections of the area. Previously we have had plants & trees donated.

Infrastructure maintenance & upgrade items:

- Install fences around all vacant COJ & government owned land within our area. In terms of the title deed of every property, this is a requirement as well as the maintenance & upkeep. As previously mentioned, the overgrown vacant properties are a major security risk for our area. We have had numerous residents attacked, robbed & murdered in our area over the past few years.
- Remove tree stumps of old tree's that were cut down on Third Rd.
- Donate plants to Chartwell to plant in order to beautify our area.
- Certain residents have requested permission to utilize the vacant COJ properties to create a horse riding path. This has become necessary due to the high speed at which cars use our roads.



Pikitup

Infrastructure maintenance and upgrade items:

- We have made numerous requests to get concrete refuse bins placed in & around our area. Pikitup previously promised us 20 bins, however we have not received any. We would like to get these bins please.



Jmpd/ Health department

Noise complaints:

- We have complaints about the noise that comes from certain properties in and around our area. We would like to engage with the relevant health department/ JMPD enforcement personal to bring a stop to this inconsiderate behaviour.

Illegal signage:

- We currently have a number of illegal signs in the area & it is something that needs to be managed on an ongoing basis. We request that this can be acted upon on a quarterly basis.

Illegal dumping:

- We have the number where this is reported to. We often pick the perpetrators up on CCTV cameras and forward the details to the JMPD number. Is this information acted upon and is there a way that we can get feedback on it?

Dumping Hotline: 082 779 1361

This list was formulated by:

Bruce Warren
Chairman
Chartwell Country Estates Residents Association



AUNTY MAUREEN TELLS

ZULU NYALA COUNTRY MANOR

By Maureen Dalglish

The lovely Zulu Nyala that we know today, where tourist buses would offload or collect their passengers on 3rd Road, will soon wear a different hat when the new owners move in.

The 400 acres (approximately 180ha) of land occupying a large portion of Chartwell was once owned by Sir George Albu of General Mining.

Sir George and his family built a grand house on the choicest separate 45 acres of land and rented the lower, more fertile ground on which were some dams, to John and Kaye Forsyth, relations of the Albu family. That was in 1964.

John and Kaye Forsyth farmed pigs, turkeys and ducks, but the farm was not a successful enterprise and consistently lost money.

As a sideline, therefore, they also started Black Magic Compost – but that, too, proved to be a problem as more people were moving into the area and they had some competition from someone making and selling compost in Broadacres.

John Forsyth was popular with some rather colourful and shady characters and they suggested that illicit diamond dealing would help him over his financial crisis. It was, therefore, at one of these gatherings, when all the stones were laid out on the dining room table and all the men were gathered around the drum of hydrofluoric acid (used to test whether the stones were genuine), that the police arrived and the illicit "diamond dealers" were all arrested.

The farming enterprise limped along for a couple more years. The pigs didn't make much money and the turkeys and ducks seemed to need a lot of special pampering or they would die. So, in 1972 the compost business, Black Magic, which was the only part of the business which made money, moved to Skeerpoort near Hartbeespoort Dam.

The next colourful tenants were George and Janie Myberg, well known and very successful showjumpers at the time. Horses, jumps and horse trailers arrived, and the scattered thatched rondavels were occupied by riders and their grooms. Then in 1981 Bella, a niece of the family, met Trevor Shaw, a diamond dealer, game ranger and very enthusiastic builder who was already a shareholder in the Phinda Game Lodge in KwaZulu Natal. Together they built up the lovely Zulu Nyala on 3rd Road. A conference centre, wedding venue, dining, and entertainment lapas were added, as well as lots of extra bedrooms.

Sadly, in 2020 Trevor passed away and Bella had to reconsider her options.

Zulu Nyala Game Lodge in Hluhluwe, KZN, which also belonged to them was a much bigger and more successful enterprise and Bella decided that she and her manager, Vinodh, would be more useful there and so Zulu Nyala in Chartwell was sold as is, to an NGO from overseas who specialise in upliftment and education.

A sad loss for Chartwell but we look forward to the next exciting chapter of 3rd Road history.



A GOOD WINTER GARDEN

By Karen Cox



Believe it or not the Autumn Equinox has come and gone and instead of birds flying around these seem to be a plethora of bats...which are so crucial in our world despite some people being scared of them.

Its good time of the year to cut veld grass and bale it for future use and also to prevent veld fires which can rage out of control in the dry months ahead, so I urge you all to cut your long grass now and cut fire breaks There are not too many fire engines working in this area.

As far as your gardens go, now is the time to cover them with frost guard, remember to water weekly and cut back some of the more sensitive plants to prevent them being properly annihilated and they will come back in Spring .You can also use long veld grass to wrap around new trees and cover bushes

A good plant to plant now are indigenous grasses because they not only are evergreen but they are seed eating plants for the birds during winter. They grow well next to a pond or water and fill empty spaces and of course host butterflies.

Succulents are pretty hardy so brighten up beds and rockeries with them to give you some colour through the winter months, make sure they are in well drained soil with good compost (Earthworm compost available at The Farm Nursery on William Nicol opposite the Indaba... very concentrated good product)

THE CHARTWELL SWEEPSTAKE

March 2022

The sudden change of venue from the Curries to Maureen, due to the fact that Margie Currie had contracted Covid, did not spoil the wonderful and well attended evening.

The Hat Draw

This was won by Julian Walker who in his usual playful way, donned the black mask with aplomb and showed that he hadn't any numbers secretly hidden in a sleeve, and drew No 090 which, funnily enough, belonged to Margie Currie. Of course, this was an hilarious coincidence, and some even suggested that she be dragged out of her sick bed to claim her prize and join the party.

Next Sweepstake Draw

The next Sweepstake will take place on Friday 29 April at the home of Tanya and Kobus Visser, 191 Sandringham Avenue.

Tanya, an Advocate and Acting Judge, will speak about Matrimonial Law including Marriage Regimes and Principles of Divorce. This promises to be a most informative evening especially for our younger Chartwell residents.

Visitors, as usual are most welcome and are in fact encouraged to come along. Bring your drinks, snacks and glasses.

Date: Friday, 29 April 2022

Time: 6pm for 6.30pm

Venue: 191 Sandringham Avenue

Enquiries: Ian Lourens (c) 082 440 9683 (email) ianl@onelogix.com
Maureen Dalglisch (c) 083 228 1753 (email)



The Battle of Nooitgedacht



A detailed and accurate model made by Rick showing the position of the British troops, their pickets, and their camps.



Rick explains how the Boers woke at 4am before first light, to attack the British camp from three different directions.

The surprise attack on General Clements' camp in the early morning was a magnificent feat of bravery and strategy by the Boer Commandos of General Beyers, De La Rey and Smuts. This Battle of Nooitgedacht made the British troops in retreat realise that they would indeed need more reinforcements and more mounted infantry to be able to capture the desired Pretoria and Rustenburg.

The sad outcome, however, was that unfortunately General De La Rey, who was keen to pursue the British in retreat, was unable to encourage his troops, who were busy celebrating their victory with the captured liquor and stores at Clements' Camp.

Had they done so, however, the Boers may very well have won the Boer War! And our history would have been rather different!

How to sign up to be a CCE member

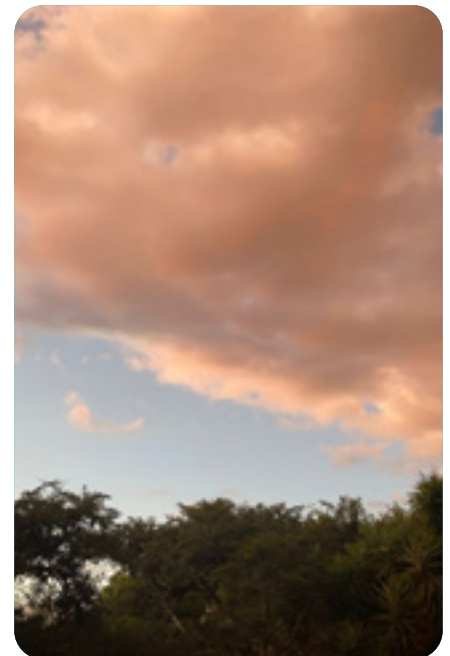
Send an email to jenni@chartwell.co.za

Directly on our website: [CLICK HERE](#)

[INSTAGRAM](#)
[@chartwell_country_estates](#)

[FACEBOOK](#)
[Chartwell CCE](#)

[WEBSITE](#)



'A WEALTH OF KNOWLEDGE IN OUR COMMUNITY'

Chartwell Entrepreneurship and Leadership School

By Mark McClue and Simon White

I (Mark McClue) was recently asked to assist in adjudicating the School entries for the 2022 JHB City Parks Competition. Schools from all over Johannesburg have entered and as CEO of ARMOUR with our focus on water resources I was particularly interested how these projects presented not just a feel good idea, but how they addressed sustainability and behaviour change within consumers, business and government. To my pleasant surprise one of the ones which presented in such a way is situated on the edge of Chartwell, in 'Chartwell West / Farmall'. The Chartwell Entrepreneurship and Leadership School.

With all the focus on the various schools establishing themselves in our area, it struck me what a strong and broad selection of education we have for residents and our surrounding community areas. Whilst it may not be everyone's ideal for 'contemporary country living' as schools certainly affect traffic at peak times and hearing children enjoying themselves at break is not everyone's favourite sound! We all (that's a presumption of course!) attended some form of school somewhere in order to gain the skills and knowledge transfer we have today. Having the right quality of schools investing in our area ranging from preschool through to high schools each with their particular focus be that academics, nature, arts and crafts, sports or life skills among others, attracts quality residents and if managed well leads to an increase in our property values. It's surely preferable to high density buildings, major roads and industrial facilities?

The following article is an introduction to the school mentioned and it was pleasing to find that the Principal Simon White has himself invested in being a local resident. Simon has some unique approaches to encouraging the development of young leaders and harnessing entrepreneurship, some of those ideas are disruptive and break

the 'norm' found elsewhere, if that's the case he and the school should fit right in within our unique community that consists of many residents that appear to be of that life long school and indeed what South Africa is crying out for as the next generation! - Mark McClue

Unlocking the Power in Education

At **Chartwell Entrepreneurship and Leadership School** are of the firm view that schools and education should be the torchbearer to society's problems and schools should provide solutions to societal challenges and problems and not the other way around. If not, then education loses its virtue and potential to benefit society. Education and schools should provide opportunities and by vessels of hope and inspiration. One of the self-defeating attributes in South Africa's political economy is that we wait for economic problems to impose themselves and direct us, whereas we should be the ones directing the economy.

Why Entrepreneurial Education?

The global market and the world of work has radically changed, and our education system must prepare South African learners to compete in the global economy for them to succeed. Quality education must focus on reversing the culture of mediocrity, victimhood, and dependency, which anchors South Africa's under-development. As a nation we desperately need to use education to foster a nurturing culture

of self-reliance, responsibility, creativity and opportunity. South African entrepreneurs exist by default and this unplanned hit and miss approach reflects poor foresight and planning. South Africa urgently needs innovators, wealth, and job creators. Chartwell Entrepreneurship and Leadership School (CELS) has deliberately positioned the school to address South Africa dearth in entrepreneurial development. CELS will be the first school in South Africa to introduce Innovation as a formal school subject from 2020.

There is global recognition that entrepreneurial education is an important catalyst for education, opportunity creation and an important instrument towards learner empowerment. Unfortunately, many parents do not have the resources and means to avail these opportunities to their children.

After extensive research and engagement, we recognised the fundamental challenges and limitations of South Africa's schooling system, the structural legacy challenges, logistical access, and the adverse economic trajectory. Entrepreneurial education is an absolute must for every child, particularly in the new global technological era that is fast engulfing our daily lives. Children should never go to school to become poor. We also recognise that we cannot empower nor transform children positively by not deliberately focussing on their economic empowerment and their future economic prosperity.





If South Africans are serious in dealing with the destructive effects of unemployment, we need to adopt a war-like mindset. Where we apply all our resources and innovative capacity to stem the unemployment tide. If we don't the unemployment fallout invariably filters and feeds a corrosive and calamitous legacy for future generations. Thereby making it more difficult to reverse inter-generational poverty.



Chartwell Entrepreneurship and Leadership School is the leading entrepreneurial education school in South Africa that has a focused approach of creating entrepreneurs for Africa. Entrepreneurial education forms a key part of the school's curriculum. The subject is taught from Grade 1. It is for this reason that our Grade 6 learners know more about business, entrepreneurship than most high school learners. Innovation, Robotics are additional curriculum subjects. Accountancy is taught from Grade 6 as a curriculum school subject, whereas other schools only teach the subject from Grade 10.



Entrepreneurial education cultivates financial literacy, money management, and strong character interpersonal skills. These traits are critical for wealth and job creation that extend beyond the entrepreneur. Entrepreneurs benefit families through jobs and taxes for the state. Their multiplier benefits for society are astronomical.



CELS learners will be the first school in South Africa that once the learners complete matric they would have saved and generated a minimum of R25000.00 of their own money. CELS will have the highest schools' savings ratio in South Africa and our learners are performing well academically. CELS is also incubating new businesses, companies and organization like the Child Entrepreneurship & Family Empowerment Company, African Entrepreneurship Museum, Township Study Centers and others that will not only create jobs, present opportunities for learners and the country.



For entrepreneurial education to thrive, requires a deliberate concerted mindset and focus. At Chartwell Entrepreneurship and Leadership School (CELS) our school uniform has

the caption "I am an Entrepreneur". This is a constant reminder and affirmation of the child's focus and quest to be an entrepreneur with all its associated benefits. Even if the child does not want to become an entrepreneur, he or she will ultimately become an intrapreneur. The learner will apply a productive mindset throughout his/her associations and entire life. They will become a more useful productive citizen for his/her company and society.

The founders established South Africa's first entrepreneurial education school, namely Chartwell Entrepreneurship and Leadership School (CELS). visit www.chartwellschool.co.za. CELS has developed Africa's first electronic portal focusing on identifying and supporting gifted learners throughout the African continent and providing these learners with bursaries. Visit www.creatingentrepreneurs4africa.africa.

It is a proven fact that societies that prioritise the future of their children more proactively are more progressive, have far less corruption and have higher economic growth. These communities will not vandalise the rail network swimming pools. As they are aware that by doing so would deny future generations the use thereof. The main thrust of the Child Entrepreneurship & Family Empowerment Company's (CEFE) value offering is that it focuses on injecting entrepreneurship as a scaffolding ladder into the lives of ordinary people. So that they can have a progressive mindset towards money, opportunities, improved quality of life and ultimately towards economic independence.

Chartwell Entrepreneurship and Leadership School places the child in the centre of South Africa's development. The "child first" approach ensures that the child's future well-being and access to opportunities is the foremost priority. The school's management in partnership with concerned patriots have developed the Child Entrepreneurship & Family Empowerment Company. CEFE takes cognise of structural inhibitors, aligning them with opportunity enablers, positive role models and access to relevant useful knowledge. All of these are designed to ensure that your child's prospects can be enhanced into the future.

There is very little research and capacitating information to align schools and tertiary institutions towards working in unison. Where learners are prepared to be solution driven for the future world of work and new career opportunities. Innovation and vision is sadly lacking in South Africa. It is therefore imperative that we all become leaders and take ownership in proactively preparing our children for the future. Our children are no less inferior to the Danes, Chinese and Israelis' etc. that are leaders in innovation. It is our mediocre conduct and standards of adults and educators that bequeath them a horrible legacy.

Education has lost its lustre as a magnet for growth, opportunity and economic mobility simply because our leaders, educators and parents have failed to lead. Every sector in our society has undergone innovation of some sort, it rather ironic that education, which is supposed to steer, invigorate and champion innovation, has itself undergone very little innovation itself in South Africa. We need to inject passion, unlock the beauty of education so that children not only embrace its benefits but also love education.

The regressive trajectory in South Africa can change and will change through progressive intervention in partnership with people that share our position and vision. This is that our children deserve better and can compete with the best in the world.

CELS's goal is to increase exposure, create opportunities, develop a productive mindset amongst learners and members, whilst developing a strong entrepreneurial culture amongst its members. This approach we believe will empower learners with relevant tools, reduce unemployment and intergenerational poverty for future parents.

The power of entrepreneurship has also enabled us to become naturally more innovative. As a result, we are increasingly becoming an incubator for new businesses and opportunities, which will direct towards our members and children. The following are key differentiators that makes Chartwell Entrepreneurship and Leadership School a unique and productive school:

- We have created South Africa's first online technology application to identify and support gifted learners with bursaries.
- Chartwell Entrepreneurship and Leadership School is the first school in Africa to have introduced entrepreneurship and Innovation as formal curriculum subjects.
- In partnership with various stakeholders Chartwell Entrepreneurship and Leadership School has developed the Learner Entrepreneurship Ecosystem Programme, which is designed to create an entrepreneurial trajectory for learners.
- We have set ourselves the objective of creating 10000 new entrepreneurs within 10 years.
- We have developed our own plant nursery at the school and we have thus far given plants and trees to more than eight schools with more than R120000.00
- We are implementing a programme that once our learners pass Matric we should be able to provide each one of them R25000.00 as a "starter pack" to propel learners towards their new journeys.
- Chartwell Entrepreneurship and Leadership School is the brainchild behind the first African Entrepreneurship Museum.

The new world order is challenging, exciting and we have to find solutions in dealing with its many challenges. Quality education and leadership without a doubt will ignite the spark in our economy to new heights of opportunity. Chartwell Entrepreneurship and Leadership School is an ally and changing force in shaping that future.





MONTESSORI ECO SCHOOL

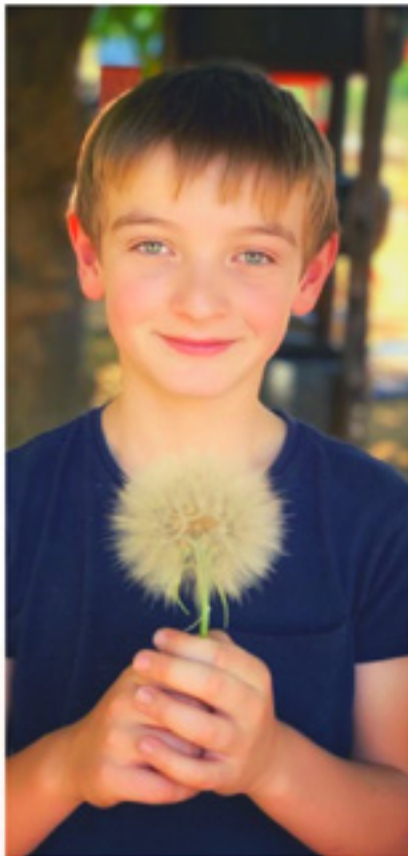
CHARTWELL HOUSE

GDE REG 700401050

Where Life is Beautiful!

IN THE HEART OF CHARTWELL:
YOUR VERY OWN
MONTESSORI ECO SCHOOL

COME AND SEE
WHAT WE CAN DO
FOR YOUR CHILD!



*Walk in tours every Wednesday from 1am - 9am
78 Third Street, Chartwell*



Heather Kreusch
Director | Montessori Eco School

082 529 7005
011 875 2103



Digitise Your Photos & Documents

Looking to declutter or Emigrating? Are your photos fading and going yellow? Let us digitise your precious photos & important documents



We will:

- ✔ *Enhance the quality of the photos and documents as we scan them*
- ✔ *Save your photos & documents to a USB drive the size of your thumb*
- ✔ *Personally collect and deliver your photos and documents free of charge for orders over 1,000 units*
- ✔ *Sort your photos and/or documents into predefined folders as per your instructions*
- ✔ *Remove your photos from their albums for a small fee*







Keep your photos & documents safe for generations to come

Call or WhatsApp Rob **071 571 9704**

<https://digitiselife.co.za>

BUSINESS DIRECTORY

| | |
|---|---|
| <p>Symbolic Ware (PTY) LTD Manufacturers of: metal & plastic name badges; cufflinks; tie slides; key rings; medals; school badges. Tel: 011 792 8777 Email: info@symware.co.za</p>   | <p>Maureen Dalglish Real Estate Professional Principal Agent (NQFS) Tel: 083 228 1753 Office: 011 708 328 3297 Email: dalglishm@mweb.co.za Website: Maureen Dalglish Real Estate</p>  |
| <p>The Castrol Classic Oil made specifically for elderly engines (1900- 1980). Tel: Giovanni on 082 786 3044 Email: sawholesale@outlook.com Website: Castrol Classic South Africa</p>  | <p>Forever Kennels Dog kennels for sale. Tel: 083 489 1369 Email: info@foreverkennels.co.za Website: Forever Kennels</p>  |
| <p>GIVING BABIES A VOICE Contact Françoise Harrison, Paediatric Occupational Therapist, and Lactation Consultant in training, for your own personalised pregnancy workshop, in which we'll discuss what your baby might tell us if he or she could! Cell: 082 886 7730 Email: françoise.harrison@gmail.com</p> | |

CLASSIFIEDS

| | |
|---|---|
| <p>Sirius Electronic Systems CC For all your bookkeeping needs: from the box of invoices to Trial Balance. Contact Jenni Brown on 071 403 3478 Email jenni@binary.co.za</p> | <p>Gardening Looking for a part time gardening job. Contact Leonard on 062 066 4552</p> |
| <p>Blue Leaf & Co. Graphic design company. Newsletters, flyers and any printing and stationery needs. Contact Hannah Warren on 071 199 7754 Email blueleafandco@gmail.com</p> | <p>Electric Fencing Installation and repairs. Compliance Certificates Sarel 084 487 7171</p> |
| <p>The Fitness League Gym Class Venue: the dance studio, Runnymead Road Day: Monday and Thursday Time: 8:30 am Contact Maureen on 083 228 1753 FUN FITNESS FRIENDSHIP</p> | <p>Chartwell Veggie Patch Contact Kingdom Mtombeni for PGS certified, fresh, organically-grown seasonal veggies. Kingdom 082 509 2974</p> |

TO ADVERTISE
contact
blueleafandco@gmail.com