



CHARTWELL

COUNTRY ESTATES

JULY / AUGUST 2021 NEWSLETTER

CCE AGM

The CCE AGM was held on the 21 July with a very good turnout of over 50 residents attending. The usual AGM business was attended to, after which an outline of the proposed new Chartwell Protection Group was presented. More information on this exciting and very necessary initiative will be communicated over the next few weeks. The new CCE board was voted in and the final Board members are as follows:

Directors:

- Melonie Fick
- Ryan Woodley
- Chris Muller
- Mark Warren
- Mark Marsden
- Bruce Warren
- Warren Williams

Co-opted directors:

- Rick Currie
- Darren Smart
- Mark McClue
- Chez



Bruce Warren

IMPORTANT NOTICE TO ALL CHARTWELL RESIDENTS

By Bruce Warren

On behalf of Chartwell Protection Group Interim Committee
29 th of July 2021

Recent events in South Africa have highlighted the need for citizens, and in particular, property owners to be able to take appropriate and lawful action to protect themselves. Chartwell Country Estates is in the process of initiating the CHARTWELL PROTECTION GROUP to start the process of setting up a community defense initiative. There is a great deal to do but the priority objective is to set up a three-pronged communication set-up, which would involve the gathering of intelligence, the setting up of a virtual communication hub and the setting up of a reaction element.

The intention is not to reinvent the wheel but to build on existing initiatives. An interim Committee to establish the Protection Group includes Bruce Warren, current Chairman of CCE, Mark McClue, Richard Currie, Mark Warren and Chris Muller. This Committee hopes soon to be able to inform all residents and property owners about the Chartwell Protection Group structure. It is not the Committee's intention to tell people what to do. Involvement will be on a voluntary basis but this Committee is confident that when

residents see the benefits of the measures being taken, few people will decide not to get involved. We must all pull together and be adequately prepared for future challenges which are sure to come if the Government's failure to respond in protecting citizens becomes a permanent feature of the Governments lack of capacity and ability.

One of the priority issues that the Interim Committee has identified is the large number of WhatsApp groups which have been set up incrementally over many years. The volume of un-coordinated, and often poorly disciplined communications is not conducive to efficiency. The Interim Committee is analyzing the current situation with the intention of recommending the consolidation of effective group initiatives and the elimination of groups which have fallen into disuse thereby becoming redundant.

Residents can expect shortly to receive a Progress Report on the initiatives being taken.

<p>7 AUGUST</p> <p>Conservancy AGM virtually and covid rules allowing at Julian Walkers plot 224 Sevenoaks</p>	<p>19 AUGUST</p> <p>COGS if COVID restrictions allow, venue TBC, contact Howie on 082 932 4778</p>	<p>27 AUGUST</p> <p>SWEEPSTAKES if COVID restrictions allow, contact Maureen on 083 228 1753</p>	<p>18 & 26 SEP</p> <p>Spruit Day and World River Day clean ups will occur across the north</p>
--	--	--	--

CCE CHAIRMANS REPORT 2020/ 21

By Bruce Warren



CCE Membership

We are currently sitting with a total of 77 CCE members. This is a disappointingly low uptake, considering that there is an estimated potential 350 eligible landowners, tenants and businesses in the area.

As I have said at the past 3 AGM's, I believe that formulating a marketing strategy to increase the membership base is something that should be a priority for the incoming board to ensure that our areas security, lifestyle and property values are maintained and ultimately improved.

the moment, but we need to be mindful that when summer arrives, so do the criminals. We are still of the belief that the most effective solution to the river front security issues is going to be a united approach with all residents along the river working together and with the CCE to find a long term, sustainable solution.

Thanks to Sweepstake funding, the CCE assisted with the erection of a Clearview fence and turn style gate at the Msawawa entrance into Chartwell at the bottom end of First Rd. This has transformed the security in that part of our area by allowing us to limit access into the area at high risk times. It also means that anyone entering the area from Msawawa does so in the view of our cameras.

Due to the curfew, the Chartwell blockwatch has continued on a curtailed basis, however we as a community shouldn't underestimate the positive effect that this has on our areas security.

The covid curfew has assisted us from a security point of view, but with the rising poverty and the current political climate in our country, we urge all residents to remain vigilant and get involved in the soon to be launched Chartwell Protection initiative.

Welcome and thank you to all residents for joining us for our AGM. As was the case last year, the CCE along with most businesses and entities around the world have continued to be affected by the Covid pandemic. Fortunately with the rollout of the vaccines, and looking at how things are returning to some semblance of normality in many vaccinated countries, there seems to be some light at the end of the tunnel so far as covid-19 is concerned. After the last week that our country has experienced, we envisage an interesting, if not challenging political year ahead for our country. Despite the challenges of the past year, the CCE has focused on maintaining and improving what we deem to be the most important facets of our area.

Here is some feedback from our various portfolios.



Virtual meetings

Despite having one or two in person board meetings towards the end of 2020, most of the CCE board meetings have been held via zoom.



Security

Despite a spate of housebreaking incidents at the beginning of this year, we have had an improved year when it comes to security. We have solidified and grown our relationship with ADT who are our still preferred security provider. The CCTV system is working well. We currently have 19 cameras positioned in key locations around the area. They are monitored 24 hours a day by ADT with the area reaction vehicle responding to any suspicious vehicles or pedestrians. All board members have constant access to the CCTV footage. Over the past year the CCE has had positive engagement with the ADT top management which has shown very positive results. Good measures have been put in place to improve communication and hold ADT to account.

The river continues to be the more vulnerable part our area. Earlier in the year, the river wath initiative underwent an overhaul with a change of personal. CCE was asked to assist with the facilitation of collecting and distributing of funds for this initiative, which have duly done. Things seem to be stable at



Estate management

KC landscaping has continued to maintain our gardens and improve the overall appearance of our area. The historic Cedar Road wall continues to be a challenge for the CCE board, costing loads of money every time it gets hit by a car or a portion collapses due to decay. We have resorted to installing weldmesh fencing to the damaged portions, but acknowledge that a more sustainable solution needs to be found to this issue.

We would like to thank Maureen, Ian and the Sweepstake initiative for funding the garden upgrade at the corner of Second Road & Runnymede Ave.



Financial & Contractual

We have read the report from our treasurer, Brian Craig on the financial performance of the CCE over the past year.

With the affect that the pandemic has had on the worlds' economy, a number of residents have struggled to keep up with their monthly membership fees. That said, the CCE has performed fairly well, recording a small surplus in most months. We have been fairly conservative with our expenditure and encourage the incoming board to look at further ways to increase memberships and reduce expenses where possible.



Environmental & Conservancy

The biggest threat to the CCE environment this year has been the well documented, ongoing sewage leaking into the Klein Jukskei River. Mark McGlue, as a co-opted CCE board member has spent countless hours engaging with and monitoring the work of Joburg Water on the new sewer pipeline and pump station upgrade projects. The new pipeline and upgrade was finally completed this last weekend and we are hoping that this will spell the end of the terrible pollution of our river. Board. Mark will continue to oversee the bio-remediation process that will be carried out over the 6 months or so. The CCE has noted certain isolated complaints of noise pollution from certain properties within and around the Chartwell. Over the past year, we have endeavoured to constructively engage with all affected parties to try and reach an amicable and workable and acceptable solution for all.



Legal and development

The CCE continues to monitor and positively engage on the development happening in and around our area. Current major developments that we are monitoring:

- The Greater Lanseria Smart City
- The R114/Cedar Rd/ R114 intersection which has recently resumed work.
- The refurbishment of the Chartwell Corner shopping centre
- The CCE is currently in advanced discussions with a number of our surrounding residential area's and estates with regard to establishing a community forum. Once established, this forum should assist us in getting improved service from COJ, Eskom and other municipal service providers through a process of collective accountability.



Communication

Communication is vital. Over the past year we have continued to use our monthly newsletter, our various whatsapp groups, our upgraded website, Facebook and Instagram as our main means of communication. As part of the Agm registration process, residents were requested to complete a survey. This is helpful for us to understand what the Chartwell residents want for our are. If you haven't done so, please go to the website and complete the survey. Once again, the website has been designed and developed as the main communication hub. Going forward, all information, documents and events will be directed through the website. The CCE directors have access to the live CCTV footage of all the cameras, the CCE map and other important information on the website. We have

advertising pages and would like to encourage landowners with cottages, B&B's and businesses to continue to advertise on the website and in the newsletter.



Social

Socialising has been very limited of the past 6 months, but at the end of 2020 we had a few very successful CCE social events. We saw the Fun Run, market day, Old Cogs and the sweepstake. Hopefully when the lockdown levels ease up again, the incoming board will be able start planning some more social events in the near future.

Conclusion:

I would like to conclude by thanking all the board members for the time and efforts that they have put in over the last six months.

- Warren Williams – Vice Chairman
- Brian Craig – Treasurer
- Chris Muller
- Rob Erikson- Miller
- Melonie Fick
- Ryan Woodley
- Co-opted
- Mark McClue
- Darren Smart
- Chez Borinho

As always I would like to extend a big thank you to Jenni for her ongoing efforts as our secretary over the past year.

THANK YOU TO THE CCE BOARD MEMBERS FROM 2020 - 2021



WARREN WILLIAMS



MELONIE FICK



ROB ERIKSEN-MILLER



CHRIS MULLER



JENNI BROWN



BRIAN CRAIG



RYAN WOODLEY

CEDAR ROAD UPGRADE

By Maureen Dalglish

Cedar Road just grew and grew and grew from a simple sand road beginning at a Fourways stop street and ending at the T-junction of the Lion Produce general dealer store in Nietgedacht.

Then in the '70s and '80s it became a tarred track with little sand roads jutting on to it at various intervals along the 6kms.

Each time some development was planned, part of the process to get approval would be an undertaking to upgrade that section of Cedar Road near the entrance to the development. The result of all this was that Cedar Road was a patchy and very crooked road without any planning for pavements or sidewalks and certainly no drainage.

Traffic using the road, however, rapidly increased and vehicles could be stuck behind brick and cement trucks for up to 20 minutes on a busy morning. It was simply impossible to pass them on such a narrow road with oncoming traffic

Cyclists, pedestrians and taxis would race along the potholed sand verges in order to pass. Taxis, in desperation, often were forced to stop in a pool of stagnant water to allow passengers to get off. Cedar Road was simply an abomination!

Then in 2017, graders and tipper trucks arrived from Jodan Construction. These were followed by loads of stone, sand and cement. The upgrading started at the southern end near Fourways and a year later ended at the Spencer Road entrance into Chartwell North Estates.

Large yellow signs "Please don't kill us" were strategically placed and seemed to serve their purpose – no one was killed but the disruption was enormous and seemed to go on forever.

Cedar Road now has four lanes, pavements, street lights and traffic lights and to drive along it at night is sheer bliss.

The last section from Spencer Road to the intersection going towards Lanseria Airport has recently begun but the exciting tale of that is for another time!

HIP HIP ... OH NO!!

By Mark McClue

Last week we received news that 'a' hippo, presumed to be Harpo and or most likely Chippo, given it's location, was caught at Steyn City.

According to reports... the hippo had been tracked by the Steyn City security whilst on alert from recent disturbances and this led to a capture and release organised by the appropriate authorities and vets.

Their aim was relocation to a reserve and a more natural bush surrounding. Initially received in a positive light by some to hear it had been moved for its safety and that of residents, sadly it was confirmed during the exercise the hippo had complications and didn't survive.

This comes as very sad news to those that have been involved for many years in observing and understanding this animals choice to make it's home in our area and the river system we share.

Lots of questions have been raised and will be debated about whether this was the right or wrong action for parties to take, whether the intended safe keeping

of the animal takes precedent over the safety of people that have in the main, no interaction or knowledge of the habit it chose or it's existence. It's true that in Chippo's case this was extending further up into the system and thus of course if it had been in an incident then parties would be in the wrong by opinion as well.

Just as with security, economic and covid 'matters', the natural world is a balance of the perfect imperfect.

Our African environment contains many hidden surprises, snakes, scorpions, porcupines, bush babies, 2m leguaans and fish eagles still inhabit our close surrounds. Occasional reports of jackal, warthog, even hyeana and leopard are sighted in our region!

Time will tell whether Harpo and Chippo were one in the same. Hopefully even with this sad chapter to the tale, we can learn to appreciate how lucky we are to enjoy such encounters and take note that we share our living with a natural world adapting to every one of our actions and impact to the sustainability of our habitat. Rip the local Hippo.



A RIVER OR SEWAGE DISPOSAL SYSTEM?

By Mark McClue

During one of the coldest July's on record whilst residents were tucked up in their warm homes deep in the Chartwell valley breaths were being held by some for two reasons; 1, because the cold weather exacerbated the rancid sewage smell in the still air hanging above our Klein Jukskei river and 2, because the long awaited completion of an upgrade to the Johannesburg Water (JW) pump station and line was set to be finished. During the past week a breath could be released as both the new and old rising main pipes were brought back into action along with an upgraded pump station to address a problem that has plagued local residents in the area and the natural habitat downstream for over 6 years.

Challenged by land negotiations, floods, engineering problems and even sabotage the installation of over 6kms of new pipe started some two years ago following lobbying by parties for the upgrading of electrical supply, pump systems and the line. 'Rising' under pressure from the Zandspruit Pumpstation in Farnall heading upstream through Chartwell to Craigavon to join the main Fourways line both the new and old line has been a contentious issue for 20 years when it was first installed.

Sadly it has proved to live up to concerns expressed back then that if it failed it could lead to a major sewage spill affecting residents and the environment.

The past 4 months have seen the worst of this as the old line made of fiberglass and used beyond its projected lifespan failed on numerous occasions causing an almost constant flow of sewage into the river (hence the title).

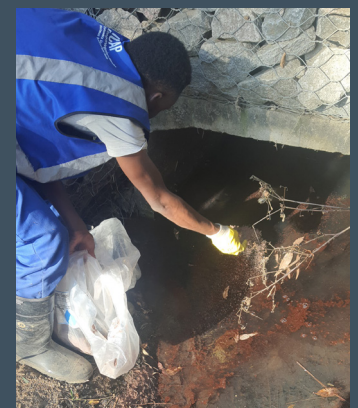
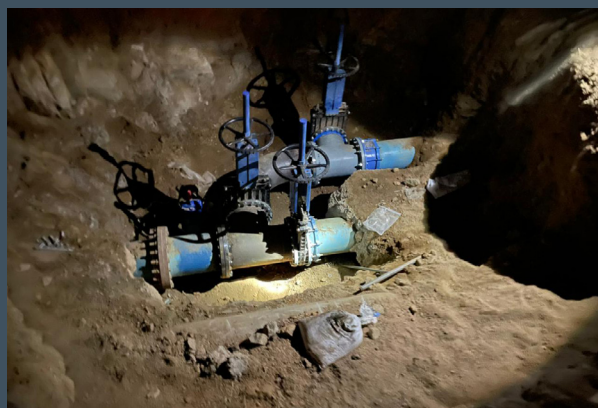
Directly affecting some residents more than others who either were subject to the full impact as 100's of thousands of liters of sewage entered past their properties or into dams along the river, frustration and tempers reached their peak when sadly over 500 fish and some birds died as a result of the spill. Whilst legal action to address the matter could be taken, which can prove costly in time and energy (+money) a focus group was formed by the concerned residents, Chartwell Conservancy, Sweepstakes, CCE and along with support from ARMOUR.org.za (a local NPO providing 'A Voice for Water') to challenge Johannesburg Water with pressure whilst cooperating as a community to understand and monitor whether they were completing the projects as required.

This process was aided by complaints to DWS, ongoing liaison with local ward councilors and a directive being arranged from the COJ health and

compliance department which along with independent testing was used to hold JW accountable to deliver a solution as per their mandate.

The result has been that JW has completed the new line and instead of making the old line redundant they have incorporated it as a failsafe system with ability to switch over in the event of maintenance needs.

The major engineering has been completed and is now being de-snagged and a further installation of a new 'surge vessel' (which had to be imported, adding to the delays during lockdown) is now being installed to combat a 'hammering' effect that occurs when the lines are filled. Lessons can be taken from this with respect to the original design plans vs the actual volume of development that occurred, the lobbying over the past 3 years to JW and IDP made by ARMOUR and residents through the working



groups with JW the catchment forums and direct pressure.

Of course it's not a perfect world and the SA water system remains under pressure from and for us all. Whilst there will no doubt be unfortunately future issues we hope that this progress will address the major spills that have been experienced and soon remove the constant and incredibly frustrating position that residents affected were suffering either directly or by the time and resource consumed whilst dealing with this.

The whole premise is made worse by the fact that no-one in Chartwell or Farmall benefits from the mains sewage as we are all on septic systems and we should be looking forward to enjoying a river that can begin to restore. Remediation is now underway, however further lobbying is being made to address this beyond treatment with chemicals and enzymes to include planting of certain grasses such as Vetiver used to stabilise systems and treat waste water naturally and a rewilding project being proposed with a local school.

Your support locally can aid this process and there are on going projects involving the student research from UJ, independant testing and monitoring

along with physical clean ups of the river banks and bridges planned once the sewage is cleared. Please make contact with Mark McClue if you wish to assist or be involved with any of these initiatives.

A special thanks needs to be made to former Farmall resident Keith Horward who provided his personal input over many years to assist with this achievement, the direct liaison of the Prinsloo and Lourens families, assistance by Julian Walker, Frank Johnson, and other residents as monitors or that have aided the team along with the colleagues at ARMOUR.org.za who volunteer to represent Chartwell and other communities at the JW working groups and Jukskei Catchment Forum.

Lastly, whilst not all may agree! thank you to the JW team that work day and night to address an aging system that is abused daily by all sectors of a growing urban city and that like all of us wake up every day to need water, for all manner of uses and flush it down a toilet somewhere. The best way we can assist for the future is to reduce what we consume, re-use what we take, dispose of waste responsibly and to report any leaks to the JW system so pressure can be maintained by us all to #MakeAnImpactDownstream



SNARING & CARING

wildlife, pets & security

By **Kailen Padayachee**

The Chartwell Sweepstakes evening recently welcomed neighbour, Kailen Padayachee to give a talk on the subject of snares. Kailen also assisted in the recent investigation to do with the fish dying off in the river.

Here Kailen explains the challenge and how our community can assist being aware for the safety and security of our wildlife, our pets whilst at the same time checking our perimeter security.

COVID-19 has had an unprecedented impact on global communities, overwhelming health systems and decimating economies the world over. So, it's understandable that, in many cases, environmental issues have taken the proverbial "back seat" over the past year. However, this pandemic is undeniably linked to environmental wellbeing, emphasizing the need for us as human beings to reconsider how we utilize natural resources. Besides bringing the consequences of the unsustainable and often illegal wildlife trade to the fore, the last 12 months have exposed the fragile relationship between socioeconomic stability and wildlife crimes. Whilst the Department of Environmental Affairs, Forestry and Fisheries have reported a decline in rhino poaching, poachers targeting meat for subsistence and possibly the illegal bush meat trade seem to have increased their efforts. Non-profit groups and community security companies working in and around

urban-fringe ecosystems in particular, have reported an increase in snare poaching, which is closely linked to the illegal bush meat trade. Snares are traps made from a variety of materials including nylon rope, steel cable, copper wire and even fibre optic cable. These materials are tied into nooses and placed over well-used animal paths, the loose end or "tag" end is attached to a sturdy anchor point, normally a tree trunk. The noose is held open by "snare stays" which are usually two sticks on either side of the noose, sharpened at the opposite end and forced into the soil (image below). When unsuspecting animals using these paths become entangled and begin to struggle, the noose gets tighter. This often results in terrible injuries and in certain circumstances, death. At the KaiNav Conservation Foundation, we have recorded an alarming increase in this type of poaching in the Gauteng Province, specifically in and around the Cradle of Humankind during the

past year. The continuing lockdowns have resulted in catastrophic job losses as well as reduced security and research contingents in many natural areas leaving these areas vulnerable and unprotected. Many community members have resorted to poaching to provide food for their families, and some have even seized the opportunity to earn money by selling illegally harvested wildlife meat to neighbours. Unfortunately, we do not foresee an abatement to such activities anytime soon. As such, the KaiNav Conservation Foundation has set out a few guidelines based on some of the common questions we receive from landowners and reserve managers, to mitigate against this kind of wildlife poaching:

Q: Which properties are most at risk from this kind of poaching?

A: If your property is within or close to natural habitats which wildlife and even domestic animals frequent, there is a possibility of snaring. This possibility increases the closer you are to informal settlements and/or rural communities.

Q: Which areas of my property do I focus my efforts on?

A: For snares to be successful, poachers need specific placement characteristics. Dense vegetation providing shelter and security, adjacent to open vegetation where animals can forage are often great for snare placements. If your property has water sources close to dense vegetation, the risk of snare placement increases. Rule of thumb is to follow animal paths which run through dense vegetation, paying close attention to the ecotones or areas at the transition between dense and open vegetation.

Q: How do I recognise the snares?

A: It is unlikely that you will recognise the snares themselves. To identify them, you must follow the “clues”.

First identify the animal paths. Follow these paths and identify chokepoints or areas where animals are forced down a single path. These could be natural chokepoints which are areas where animals are forced between natural barriers such as dense vegetation or geographic features, or forced chokepoints, which are areas that have been modified by the poacher in some way, either by cutting down vegetation to block other paths or brush packing and creating barriers with logs and debris to create a narrow path. Once the chokepoint has been identified, search the chokepoint for the snare stays. Following this procedure will most often uncover the snare itself.

Q: My property has no dense vegetation but is close to informal or rural communities, am I still at risk of snare poaching?

A: If wildlife and domestic animals frequent your property and you have fence lines, your property is at risk of snare poaching. We have identified snaring in suburban gardens with fences bordering natural corridors. Fence lines provide the perfect anchor-point for snares, they are sturdy and force animals to crawl beneath them. Once again, focus your attention on well-used animal paths passing through fence lines.

Q: Are pets in danger of being snared?

A: Yes! Over the past year, more and more family pets have been reported being caught in snares. In some cases, pets have been seriously injured, lost limbs and even died.

Q: What should I do should I find a live animal in a snare?

A: First and foremost, exercise extreme caution. Even small animals can be very dangerous to handle when trapped. Should the animal be safe enough to handle, cover in a towel and minimise movement. Using wire

cutters, remove the snare from the anchor point and assess the animal for open wounds before attempting to remove the snare. Should there be injuries, immediately take the animal to your nearest veterinarian or accredited wildlife rehabilitation centre. Should there be no injuries, remove the snare if safe to do so and release the animal in a safe area. Should you find an animal in a snare and require assistance you can contact the KaiNav Conservation Foundation using the below contact details.

Q: What do I do if I find a snare or other traps?

A: The KaiNav Conservation Foundation’s S.N.A.R.E Initiative has been developed to gather information on snare poaching, particularly in and around urban areas. Before removing the snare or trap, take note of the GPS coordinates and size of the snare noose and contact us using the contact details below with the details and your address and we will gladly collect the snares, traps, and data from you for inclusion in our research and SNARE Art community development program.

Q: I have no time to search for these snares and traps, can KaiNav Conservation Foundation assist me?

A: Yes, we understand that many community members are extremely busy and not everyone has the luxury of consistently clearing their properties of snares. Please feel free to contact the KaiNav Conservation Foundation and we will be more than happy to assist you protect your wildlife and pets.

CONTACT INFORMATION

Website: www.kainavconservation.org





FaceBook: @kainavconservation

Email: info@kainavconservation.org

Contact number: 082 770 56 23



BUSINESS DIRECTORY

<p>Symbolic Ware (PTY) LTD Manufacturers of: metal & plastic name badges; cufflinks; tie slides; key rings; medals; school badges. Tel: 011 792 8777 Email: info@symware.co.za</p>  <p>SYMBOLIC WARE THE BADGE PEOPLE</p>	<p>Maureen Dalglish Real Estate Professional Principal Agent (NQFS) Tel: 083 228 1753 Office: 011 708 328 3297 Email: dalglishm@mweb.co.za Website: Maureen Dalglish Real Estate</p> 
<p>The Castrol Classic Oil made specifically for elderly engines (1900- 1980). Tel: Giovanni on 082 786 3044 Email: sawholesale@outlook.com Website: Castrol Classic South Africa</p> 	<p>Forever Kennels Dog kennels for sale. Tel: 083 489 1369 Email: info@foreverkennels.co.za Website: Forever Kennels</p> 

CLASSIFIEDS

<p>Sirius Electronic Systems CC For all your bookkeeping needs: from the box of invoices to Trial Balance. Contact Jenni Brown on 082 950 2335 or jenni@binary.co.za</p>	<p>Gardening Looking for a part time gardening job. Contact Leonard on 062 066 4552</p>
<p>Blue Leaf & Co. Graphic design company. Newsletters, flyers and any printing and stationery needs. Contact Hannah Warren on 071 199 7754 or blueleafandco@gmail.com</p>	<p>Electric Fencing Installation and repairs. Compliance Certificates Sarel 084 487 7171</p>
<p>The Fitness League Gym Class Venue: the dance studio, Runnymead Road Day: Monday and Thursday Time: 8:30 am Contact Maureen on 083 228 1753 FUN FITNESS FRIENDSHIP</p>	

TO ADVERTISE
contact
blueleafandco@gmail.com